
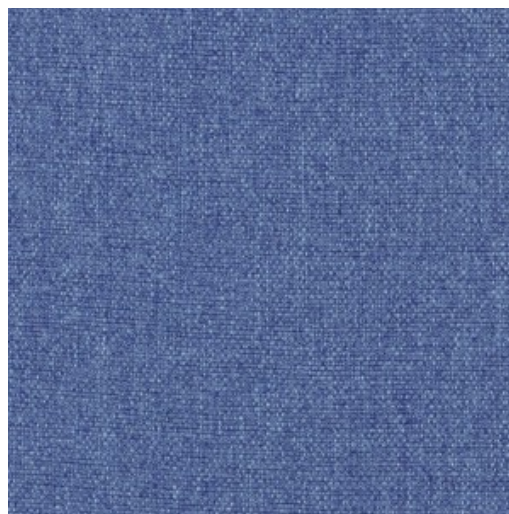


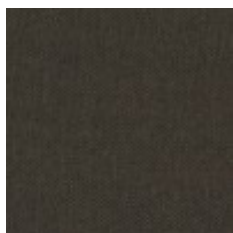
Use	Upholstery, Panel Fabrics
Content	100% Polyester
Cleaning	Water-based/Solvent (WS)
Weight	15 ounces Yard
Width	55 inches (140 cm)
Shown Railroaded	No
Flammability	ASTM E 84 Unadhered Class A, CA TB 117-2013, NFPA 260, UL Listed
Abrasion	100,000 Wyzenbeek double rubs (CD)
Lightfastness	40 hours
ACT	
Standards & Certifications	Healthier Hospitals, HPD, LBC Red List Compliant, Mindful Materials, Prop 65 Compliant, WELL
Material Chemistry	No Antimicrobials, No Flame Retardants, No PFAS
LEED	Material Ingredients
Sustainable Logistics	Ships Carbon Neutral
Warranty	5 years
Origin	China



Birch
3492-101



Nutmeg
3492-102



Walnut
3492-103



Cerise
3492-301



Brick
3492-302



Caspian
3492-401



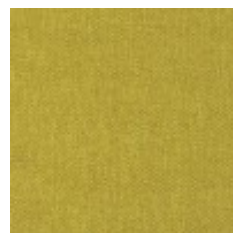
Bluebell
3492-402



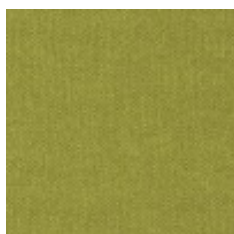
Cobalt
3492-403



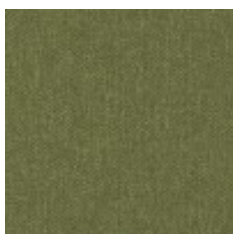
Indigo
3492-404



Mustard
3492-501



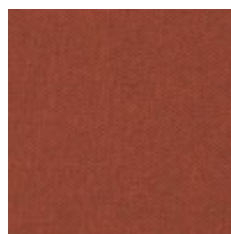
Limelight
3492-502



Moss
3492-503



Olive
3492-504



Canyon
3492-702



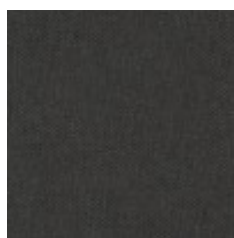
Asphalt
3492-801



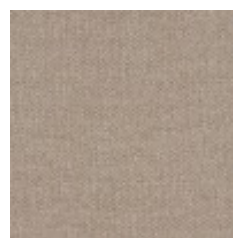
Iron
3492-802



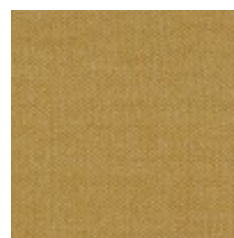
Lead
3492-803



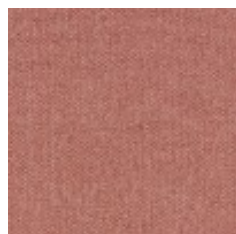
Carbon
3492-804



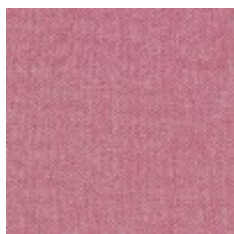
Sand
3492-104



Canary
3492-201



Salmon
3492-303



Pink
3492-304



Mulberry
3492-305



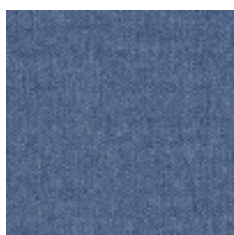
Currant
3492-306



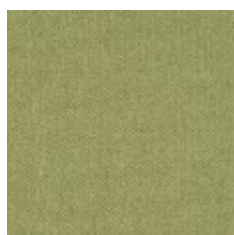
Sea
3492-405



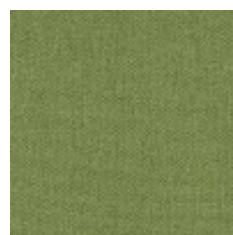
Bright Blue
3492-406



Denim
3492-407



Spring
3492-505



Grass
3492-506



Juniper
3492-507



Concord
3492-603



Iris
3492-604



Storm
3492-805